



केन्द्रीय प्रौद्योगिकी संस्थान कोकराझार

CENTRAL INSTITUTE OF TECHNOLOGY KOKRAJHAR
Deemed to be University, under the MoE, Govt. of India
Kokrajhar, BTR, Assam-783370

CENTRAL INSTITUTE OF TECHNOLOGY KOKRAJHAR ENTRANCE EXAM-2025

**ADMISSIONS 2025-26
(DIPLOMA, UG, PG & Ph.D. PROGRAMMES)**

INFORMATION BROCHURE-2025




Phone No. 9365031406
Email: query_2025@cit.ac.in
www.cit.ac.in



IMPORTANT DATES

➤ ONLINE APPLICATION PROCESS STARTS	06 th MARCH 2025
➤ LAST DATE OF SUBMISSION OF APPLICATION	31 st MAY 2025
➤ DATE OF ENTRANCE EXAM (FOR DIPLOMA/UG/PG)	08 th JUNE 2025
➤ DATE OF ENTRANCE EXAM (FOR Ph.D)	15 th JUNE 2025
➤ DECLARATION OF RESULTS (FOR DIPLOMA/UG/PG)	20 th JUNE 2025
➤ DATE OF COUNSELLING AND ADMISSIONS	24 th JUNE -27 TH JUNE 2025



CONTENTS

Sl. No.	Particulars	Page Number
1.	About CITK	1
2.	The Institute's Location	1
3.	Organizational Framework of the Institute	2
4.	Vision and Mission of the Institute	2-3
5.	Programs offered, branches/courses, and intake capacity	4
6.	Details about the departments' research focus	5-6
7.	Eligibility Criteria for the Diploma Programme	6
8.	Eligibility Criteria for Undergraduate Programme	6-7
9.	Eligibility Criteria for Postgraduate Programme	7-8
10.	Eligibility Criteria for Ph.D. Programme	8
11.	Medical Fitness	8
12.	Reservation Policy	8
13.	Lateral Entry Seat Distribution	9
14.	Admission Procedure	9-10
15.	How to Apply	11
16.	Entrance Examination Fees	11
17.	Entrance Examination Centre	11
18.	Important Information	11-12
19.	Issue of Admit Card	12
20.	Schedule of CITKEE-2025	12
21.	Declaration of Result	12
22.	Selection Process	12-13
23.	Counselling and Admission	13
24.	Details of Important Documents/Certificates	14-15
25.	Fee Structure	15
26.	Admission Withdrawal Rule	15
27.	Attendance in Class after Admission	16
28.	General Academic Regulations	16
29.	Change of Branch (Diploma/Undergraduate only)	16
30.	Renewal Registration for Continuing Students	17
31.	Hostel Admission and General Hostel Rules	17
32.	Anti-ragging	18
33.	Departmental Details and Syllabus of the CITKEE-2025	18

1. ABOUT CITK

Central Institute of Technology Kokrajhar (CITK), is a 'Deemed to be University' under the De-novo category vide Notification No. F.9-1/2016-U3 (A), dated December 13, 2018. It is administered under the Ministry of Education (MoE), Government of India. It was established as an outcome of the Memorandum of Settlement (MoS) on Bodoland Territorial Council (BTC) signed between the Assam Government, the Union Government and the Bodo Liberation Tigers (BLT), on February 10, 2003, in New Delhi. The foundation stone of CIT Kokrajhar was laid on the 10th of February, 2003 by the then Honorable Chief Minister of Assam, Sri Tarun Gogoi in the presence of the then Honorable Deputy Prime Minister of India Sri L. K. Advani. Consequently, the academic and administrative activities of CITK started on December 06, 2006. The Institute is run by an autonomous body registered with the Societies Registration Act 1860 and functions under a Board of Governors (BoG).

CITK was established with the basic objective of fulfilling the aspirations of the Bodo people relating to their cultural identity, language, education, and overall economic development of the region. The academic programmes and curriculum emphasized imparting the youth with requisite technological and vocational training to produce the required manpower to give an impetus for economic growth of the area and to integrate the people of Bodoland into the mainstream of technical and vocational education.

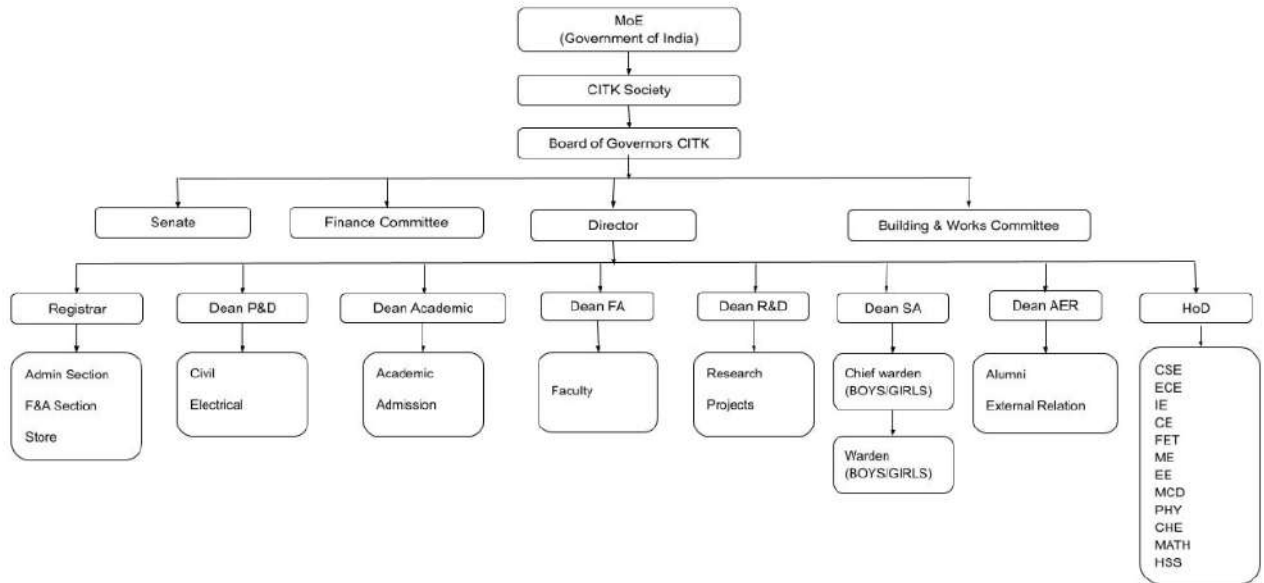
2. THE INSTITUTE'S LOCATION

Central Institute of Technology Kokrajhar is located in a serene landscape at about 12 kilometers north of the district headquarters of Kokrajhar District of lower Assam. It is surrounded by natural beauties comprising the cultivated lands and villages inhabited by indigenous people of mixed culture. The Institute is easily accessible by Railway and Highway. It is at a distance of 10 km south of NH-31 and 10 km from the Kokrajhar railway station. The nearest airport is LGBI Airport, Guwahati which is about 240 km away from the institute.



3. ORGANIZATIONAL FRAMEWORK OF THE INSTITUTE

Organisation Chart



4. VISION AND MISSION OF THE INSTITUTE

VISION

The Central Institute of Technology Kokrajhar has a vision-

- ❖ To be a Centre of Excellence in Technical and Vocational Education.
- ❖ To build a high-tech campus with all infrastructure and state-of-the-art facilities, committed to facilitating and promoting the latest technology, vocational skills, and training.
- ❖ To encourage innovative teaching, training, and learning methodologies and implement target group-specific skill development programmes.
- ❖ To foster Institute-Industry participation to build synergies in entrepreneurship, market-oriented programmes, and employability of participants in technology-intensive enterprises.
- ❖ To create a vibrant environment for education with an ethos for research and development.
- ❖ To build a Green Campus by emphasizing the adoption of energy-efficient buildings, power from alternative energies, rainwater harvesting, showcase technology for energy conservation and address climate change issues.
- ❖ To contribute to the socio-economic development of the region.
- ❖ To create a unique brand name for itself in the field of technical and vocational education in the country.

MISSION

The Mission of Central Institute of Technology Kokrajhar is -

- ❖ To establish a world-class Institute for education, career, technology, and vocational training.
- ❖ To promote a two-cycle modular structure with the objective to make students free from a single career path by enabling them to opt for alternatives at different stages of their study
- ❖ To ensure access to education, training, knowledge and technology for promoting skills and innovations to all.
- ❖ To foster skill development with innovative teaching techniques and learning technologies such as e-business and e-learning.
- ❖ To address challenges in rapid shifts in the nature of demand for skills by emphasizing research, development, commercialization, and industrialization with a necessary thrust to shift from traditional mass approaches to provide more customized training.
- ❖ To focus on Institute-Industry partnerships to implement innovative strategies to create new entrepreneurs, enterprises, and industries with access to leading edge skills and technology.
- ❖ To empower the people to fulfill their aspirations by fostering know-how in technology and vocational training to produce skilled and trained manpower from the Bodoland area by serving as a link between education, industry and economic self-reliance.



5. PROGRAMS OFFERED, BRANCHES/COURSES, AND INTAKE CAPACITY

Sl. No.	Name of Programs	Name of Branches/Courses	Intake capacity
1.	Diploma in Engineering (Direct Entry)	Electronics and Communication Engg.	30
		Computer Science and Engg.	30
		Control and Instrumentation	30
		Food Processing Technology	30
		Civil Engineering	30
2.	Diploma in AMT. (Direct Entry)	Animation and Multimedia	30
3.	Diploma in Engineering (Lateral Entry)	Electronics and Communication Engg.	03
		Computer Science and Engg.	03
		Control and Instrumentation	03
		Food Processing Technology	03
		Civil Engineering	03
4.	B. Tech. (Direct Entry)	Electronics and Communication Engg.	45
		Computer Science and Engg.	70
		Instrumentation Engg.	45
		Food Engineering and Technology	45
		Civil Engineering	45
5.	B. Tech. (Vertical + Lateral Entry)	Electronics and Communication Engg.	15+6
		Computer Science and Engg.	20+9
		Instrumentation Engg.	15+6
		Food Engineering and Technology	15+6
		Civil Engineering	15+6
6.	B. Des. (Direct + Vertical Entry)	Multimedia Communication and Design	25+5
7.	M. Tech	Water Resources and Hydraulics Engineering	18
		Green Energy Technology	18
		Food Engineering and Technology	18
		Computer Science and Engineering	18
8.	M.Des.	Multimedia Communication and Design	15
9.	Ph.D.	Core Engineering Branches (ECE, CSE, IE, FET, Civil Engg.)	-
		Allied Engineering Branch (Mechanical Engg.)	-
		Basic Sciences (Physics, Chemistry and Mathematics)	-
		Humanities and Social Sciences	-

6. DETAILS ABOUT THE DEPARTMENTS' RESEARCH FOCUS

The detailed list of specific research areas for Ph. D Programme in various departments are-

Department	Research Areas
Electronics and Communication Engineering (ECE)	Digital Image processing, Computer vision, Medical Image analysis, Biomedical signal analysis. Quantum machine learning; Microstrip Patch Antenna, Microwave Filter, Frequency Selective Surface; Optoelectronic Oscillator (OEO), Microwave Photonics (Radio-Over-Fiber), Nonlinear dynamics; Analog Circuit Design, Computational Nanoelectronics; Quantum image processing, Quantum Deep learning; Organic Field-Effect Transistor-based devices (for flexible and green Electronics)- Device fabrication and characterization; Energy devices- Lithium-ion batteries and Supercapacitors, Development of electrode nanomaterials.
Computer Science & Engineering (CSE)	Cyber Security, AI and Machine Learning, Human Computer Interaction, Architectural Design of Integrated Circuit, Internet of Things, Wireless Sensor Networks, and Soft Computing, Blockchain Technology, Satellite Image processing, Computer Vision, Data Mining, Machine Learning, Natural Language Processing, Corpus linguistic, Data Science, Machine / Deep learning.
Civil Engineering (CE)	GeoTechnical Engineering, Geo-Environmental Engineering, Ground Improvement, Soil Stabilization, Seismic Microzonation, Liquefaction Analysis. Water Resources Engineering, Engineering Hydrology, Hydropower Engineering, Earthquake Resistant Masonry Building, Concrete Technology, Building Materials.
Food Engineering and Technology (FET)	Sustainable food preservation, and active and intelligent food packaging system Food Packaging and Preservation; Edible Films and Coatings, Functional Nanomaterials, Food and Agricultural waste Valorization; Fermentation biotechnology, Thermo-sonication of juices; Ultrasound assisted extraction of bioactive compounds; Thermal processing of foods, Rice science and technology; Starch modification; Traditional food products; Functional food product development, Phytochemicals and bioactive components, functional food, value addition and nutrient enhancement, Cold plasma application in food Processing; Renewable Energy application in Food Processing; Machine Design.
Instrumentation Engineering (IE)	Instrumentation, Signal conditioning and processing, AI and Machine Learning, Signal Processing, Image Processing, Biometrics, Biomedical Instrumentation, Robotics, Mechatronics, Semiconductor Devices, Power Electronics, Modeling and Control of Dynamical Systems, Process Control, PID Design, Solar Energy Optimization, Energy Harvesting, Renewable Energy, Power Quality Assessment and Improvement, Non-Destructive Testing and its Applications.
Physics	Ferroelectric and Multiferroic, Ceramic composite, Perovskite solar cell device, Multilayer Thin Films for Bit Patterned Media, Thin Films of exchange coupled Hard/Soft bilayers towards permanent magnets, Thin films of Binary and Ternary Alloys for high-density Magnetic Storage Devices, Thin films of Spin Valve Structure for Magnetic Sensors, Nano-composite Materials, Photocatalysis, Heterogeneous catalyst, Dye Degradation, Graphene, Waste & Green Materials, Carbon Nanotube, Silk Based Material.
Chemistry	Porous Materials, Heterogeneous Catalysts, Mesoporous Materials, Graphene, Carbon nitride, Hydrotalcite, Carbon dot, Nano-composite, Synthetic Methodologies Intermediate & Platform Chemicals, Renewable Energy, Waste to Value-added Chemicals, Biomass, Biofuel & Pyrolysis, Photocatalysis, Waste Water Treatment, Synthesis of coordination compounds and their application in different fields, Synthesis of MOF and their applications, Nanocomposite materials with organic/bio polymers and their applications in electronics, Computational studies on- Structural and configurational aspects of DNA/RNA base pairs, Conformational properties of

	small bio-molecules and their interactions with metals, In-silico docking and molecular mechanical studies, Molecular dynamics simulations and Weak interactions.
Mathematics	Plasma physics, Fluid Dynamics, Number Theory, Neutrosophic Sets and Logics, Fuzzy Mathematics, Topology, Mathematics Education.
Humanities and Social Sciences	Agricultural Economics, Industrial Economics and Entrepreneurship, Human Development and Women Empowerment, English Language, Literature and Cultural Studies.
Mechanical Engineering	Biomass waste to Bio-Energy and Bio-char, Use of char in various engineering applications, CO ₂ capture, Solar thermal energy conversion

7. ELIGIBILITY CRITERIA FOR DIPLOMA PROGRAMME

DIPLOMA IN ENGINEERING (DIRECT ENTRY)

Educational Qualifications: Candidates must have passed HSLC or equivalent with 40% of marks in aggregate and 40% of marks in Science, Mathematics (or Advanced Mathematics), and English taken together (5% relaxation for ST/SC/PWD candidates).

Age limit: The age of the candidates as on 01-08-2025 must not exceed the following age limit for different categories- (i) OPEN/OBC-19 years; (ii) SC/ST/PWD-24 years; (iii) Female candidates-22 years.

DIPLOMA IN ENGINEERING (LATERAL ENTRY)

Educational Qualifications: Candidates must have passed the 10+2 examination with Physics/ Mathematics / Chemistry/ Computer Science/Electronics/Information Technology/ Biology/Informatics Practices/ Biotechnology/ Technical Vocational subject/ Agriculture/ Engineering Graphics/ Business Studies/Entrepreneurship.

Or 10th + (2 years ITI) shall be eligible for admission to Second Year Diploma Course(s) in ANY branch of Engineering and Technology.

Age limit: Candidates must not be above 40 years of age as on 01-08-2025 (45 years for SC/ST/PWD and 43 years for OBC and female candidates).

DIPLOMA IN ANIMATION (DIRECT ENTRY)

Educational Qualification: Candidates must have passed the 10th Std./ SSC examination with at least 40% marks in the qualifying examination (5% relaxation for ST/SC/PWD candidates).

Age limit: The age of the candidates as on 01-08-2025 must not exceed the following age limit for different categories- (i) OPEN/OBC-19 years; (ii) SC/ST/PWD-24 years; (iii) Female candidates-22 years.

8. ELIGIBILITY CRITERIA FOR UNDERGRADUATE PROGRAMME

B.TECH. PROGRAMME:

Educational Qualification:

Direct Entry: Passed 10+2 examination with Physics/ Mathematics / Chemistry/ Computer Science/ Electronics/ Information Technology/ Biology/ Informatics Practices/ Biotechnology/ Technical Vocational subject/ Agriculture/ Engineering Graphics/ Business Studies/ Entrepreneurship as per permissible for Agriculture Engineering.

Obtained at least 45% marks (40% marks in case of candidates belonging to reserved category) in the above subjects taken together.

OR Passed min. 3 years Diploma examination with at least 45% marks (40% marks in case of candidates belonging to reserved category) subject to vacancies in the First Year, in case the vacancies at lateral entry are exhausted.

Vertical Entry: Diploma in the concerned branch of Engineering/Technology from CIT with overall 65% marks (5% relaxation for SC/ST/PWD).

Lateral Entry: Passed Minimum Three years / Two years (Lateral Entry) Diploma examination with at least 45% marks (40% marks in case of candidates belonging to reserved category) in ANY branch of Engineering and Technology. OR Passed B.Sc. Degree from a recognized University as defined by UGC, with at least 45% marks (40% marks in case of candidates belonging to reserved category) and passed 10+2 examination with Mathematics as a subject.

Age Limit

Direct Entry: Candidates must not be above 21 years, or below 17 years of age as on 01- 08-2025. The upper age limit is relaxed to 3 years for SC/ST/PWD.

Lateral Entry: Candidates must not be above 40 years of age as on 01-08-2025 (45 years for SC/ST/PWD and 43 years for OBC and female candidates).

B.DES. PROGRAMME

Educational Qualification

Direct Entry: 10+2 (any stream) or equivalent with 50% marks in aggregate (5% relaxation for ST/SC/PWD candidates).

Vertical Entry: Diploma in Animation and Multimedia Technology from CITK with 60% overall marks (5% relaxation for SC/ST/PWD).

Age Limit

Direct Entry: Candidates must not be above 21 years, or below 17 years of age as on 01- 08-2025. The upper age limit is relaxed to 3 years for SC/ST/PWD candidates.

Vertical Entry: Candidates must not be above 40 years of age as on 01-08-2025 (45 years for SC/ST/PWD and 43 years for OBC and female candidates).

9. ELIGIBILITY CRITERIA FOR POST-GRADUATE PROGRAMME:

Minimum qualifications for M.Tech Programme

Minimum CGPA of 6.5 or 60% of marks or First Class in the qualifying degree, fulfilling specific requirements for different disciplines, are as indicated below:

Food Engineering & Technology: B.E./B.Tech. degree in Food Technology/Food Engineering /Food Engineering & Technology /Food Technology & Biochemical Engineering /Agricultural & Food Engineering/Biotechnology or M.Sc. degree in Food Technology /Food Science and Technology/ Food Processing Technology/ Biotechnology for the specialization of Food Engineering & Technology or equivalent.

Water Resources & Hydraulic Engineering: B.E./B.Tech. Degree in Civil Engineering/Water resources/hydraulic Engineering or equivalent for the specialization.

Green Energy Technology: B.E./B.Tech. Degree in Electrical Engineering/ Mechanical Engineering/ Electronics Engineering/Instrumentation Engineering/ Civil Engineering/Chemical Engineering/ Food Engineering/ Energy Engineering or equivalent.

Computer Science & Engineering: B.E/B.Tech. Degree in Computer Science & Engineering/ M.Sc. (Computer Science/Information Technology) /Graduates (AMIETE) from Institution of Electronics and Telecommunication Engineers (IETE) in Computer Science & Engineering or MCA from a recognized Institution or equivalent.

Minimum qualifications for M.Des. Programme

Minimum CGPA of 6.0 or 55% of marks in the qualifying degree/diploma. Candidates who have completed a three-year degree programme (10+2+3 pattern) in any specialization from a recognized college or university with a minimum experience of one (1) year of professional programme/work experience in the relevant areas of art, animation, multimedia, mass media, and design OR passed Four (4) year B.Des/BFA/BVA/Bachelors in Multimedia/Fashion/Accessory design or professional degree in BFA, BVA or equivalent.

10. ELIGIBILITY CRITERIA FOR Ph.D. PROGRAMME

For admission to the Ph.D. Program in Engineering Departments, a candidate must satisfy the following criteria:

- (a) Master's degree in the relevant field of Engineering/Technology/Design/Science/ Humanities and Social Science, with at least 55% marks in aggregate or its equivalent grade 'B' in the UGC 7-point scale (or an equivalent grade in a point scale wherever grading system is followed) or an equivalent degree from a foreign educational Institution accredited by an Assessment and Accreditation Agency which is approved, recognized or authorized by an authority, established or incorporated under a law in its home country or any other statutory authority in that country for the purpose of assessing, accrediting or assuring quality and standards of educational institutions
- (b) A relaxation of 5% of marks, from 55% to 50%, or an equivalent relaxation of grade, for those belonging to SC/ST/OBC (non-creamy layer)/Differently-Abled and other categories of candidates as per the decision of the UGC from time to time, or for those who had obtained their Master's degree prior to 19th September, 1991.

11. MEDICAL FITNESS

Admission into any of the Diploma/B.Tech/B.Des/M.Tech/M.Des/Ph.D programme of the institute is subject to the candidates being declared medically fit by the Institute's Medical Officer or a Medical Officer of a Govt. Hospital for the purpose. Candidates should also separately submit an Eye fitness Certificate issued by an Eye specialist.

12. RESERVATION POLICY

In filling up the available seats, the Institute shall follow the following reservation policy-

- (a) 60% from BTR (60% ST, 5% SC, 15% OBC and 20% Open)
- (b) 20% from North-East region excluding BTAD.
- (c) 17% from All India excluding North-East Region.

(d) 03% for person with disability candidates

The reservation policy for serial No.s (b),(c) and (d) will be as per the policy of the Government of India. In case the seats as mentioned in (b), (c) & and (d) are not filled up by candidates from respective regions, the seats will be filled up by candidates from BTR.

13. LATERAL ENTRY SEAT DISTRIBUTION

REGION	CATEGORY	CSE	ECE	IE	FET	CE	TOTAL
BTAD	ST	4	2	2	2	2	12
	SC	1					1
	OBC	1	1		1		3
	OPEN		1	1	1	1	4
NE	ST					1	1
	SC			1			1
	OBC		1		1		2
	OPEN		1			1	2
AI	ST	1					1
	SC			1			1
	OBC				1	1	2
	OPEN	1		1			2
PWD	OPEN	1					1
Total		9	6	6	6	6	33

14. ADMISSION PROCEDURE

DIPLOMA PROGRAMME

DIPLOMA IN ENGINEERING (DIRECT ENTRY)

A candidate may seek admission into the Diploma programme of CITK by qualifying the Central Institute of Technology Kokrajhar Entrance Examination (CITKEE) -2025 conducted by CIT Kokrajhar.

DIPLOMA IN ANIMATION & MULTIMEDIA TECHNOLOGY (DIRECT ENTRY)

A candidate may seek admission into the Diploma in Animation and Multimedia programme of CITK qualifying the Central Institute of Technology Kokrajhar Entrance Examination (CITKEE) -2025 successfully as conducted by CIT Kokrajhar.

DIPLOMA IN ENGINEERING (LATERAL ENTRY)

Candidates who have passed ITI or XII (Science) from recognized institutions may seek admission to 3rd semester of the Diploma programme under the Lateral Entry scheme by qualifying for the CITKEE -2025. The seats for lateral entry shall be supernumerary in nature and a maximum number of seats shall be 10% of the intake capacity.

UNDERGRADUATE PROGRAMME

B. TECH (DIRECT ENTRY)

A candidate may seek admission into the first semester of B. Tech. programme of CITK either by qualifying the Central Institute of Technology Kokrajhar Entrance Examination (CITKEE) -2025 conducted by CITK or by qualifying the JEE (Mains)-2025 conducted by NTA. **Candidates from BTAD and NE Region applying only through JEE (Mains)-2025 need to submit the Score Card of JEE (Mains)-2025 within ten (10) days from the day of declaration of JEE (Mains)-2025 result.** Candidates from AI Region seeking admission through JEE (Mains)-2025 need to participate in the central counselling conducted by the Central Seat Allocation Board (CSAB). Out of the total seats, 60% of seats shall be filled up by the candidates qualifying CITKEE and the remaining 40% of seats shall be filled up by the candidates applying through JEE (Mains)-2025. However, if the seats allocated for admission through JEE (Mains)-2025 are not filled, then those seats will be filled through CITKEE-2025.

B. TECH (LATERAL/VERTICAL ENTRY)

Vertical Entry: Candidates who have passed from CITK in the current year having requisite qualifying marks should submit their application and will be admitted without any entrance examinations.

Lateral Entry: Candidates who have passed a Diploma from any AICTE/UGC recognized institutions including CITK may seek admission to 3rd semester of B.Tech. programme under the Lateral Entry scheme by qualifying the CITKEE-2025.

B.DES (DIRECT ENTRY)

A candidate may seek admission into the first semester of B.Des programme either by qualifying the Central Institute of Technology Kokrajhar Entrance Examination (CITKEE)-2025 conducted by CITK for B.Des. programme or by qualifying the Undergraduate Common Entrance Examination of Design (UCEED)-2025 conducted by IIT BOMBAY. **Candidates seeking admission only through UCEED also need to submit the scorecard of UCEED-2025 within ten (10) days from the declaration of the UCEED Result.** Out of the total seats, 60% of seats shall be filled up by the candidates qualifying CITBDAT and the remaining 40% of seats shall be filled up by the candidates applying through UCEED-2025. However, if the seats allocated for admission through UCEED-2025 are not filled, then those seats will be filled through CITKEE-2025.

B.DES. (VERTICAL ENTRY)

Candidates who have passed a three-year diploma in Animation and Multimedia Technology from CITK in the current year having requisite qualifying marks may submit their application under the vertical entry scheme. The selection will be based on merit.

N. B.: The Admission Committee shall determine from time to time the percentage of marks/CGPA and other requirements for admission into various courses offered by the institute and are incorporated in the information brochure for admission into different diploma/degree programs.

POSTGRADUATE PROGRAMME

M.TECH PROGRAMME

The selection of aspiring candidates for admission in the M.Tech programme shall be through the GATE score or the performance of candidates in Central Institute of Technology Kokrajhar Entrance Examination (CITKEE)-2025 conducted by CIT Kokrajhar. The candidates having a valid GATE may be

given preference. However, the candidates must fulfill the eligibility criteria of essential educational qualifications. The GATE scores must be submitted along with the Application Form or upload the same to the admission portal by logging into individual accounts at least 15 days before the declaration of the CITKEE-2025 Result.

M. DES PROGRAMME

The selection of aspiring candidates for admission in the M.Des programme shall be through either the CEED score or the performance of candidates in CITKEE-2025 for M.Des Admissions conducted by CIT Kokrajhar. The candidates having a valid CEED may be given preference. However, the candidates must fulfill the eligibility criteria of essential educational qualifications. The CEED scores must be submitted along with the Application Form or uploaded to the admission portal by logging into individual accounts at least 15 days before the declaration of the CITKEE-2025 result.

Ph.D PROGRAMME

The selection of candidates for admission into the Ph.D programme is made through a Written Test and Personal Interview conducted by CIT Kokrajhar. However, the candidates having valid NET/SLET certificates may be considered eligible for appearing in a Personal Interview without appearing in the written test conducted by CITK.

15. HOW TO APPLY

ONLINE MODE ONLY: Candidates may fill out the application form through **online portal** by visiting the website: <https://admission.cit.ac.in/>. Before completing the submission of the Online Application Form, candidates are advised to go through the instructions carefully. Candidates need to print and retain a hard copy of the online application form for their reference.

16. ENTRANCE EXAMINATION FEES

The Application Fee for various Entrances Schemes are as given below-

Programme	Application Form Fee
Diploma	Rs 1200/- (600/- for SC/ST/PWD)
B.Tech. (Direct/Lateral/Vertical)/ B.Des. (Direct/Vertical)	Rs 1200/- (600/- for SC/ST/PWD)
M.Tech. / M. Des. /Ph.D	Rs 1500/- (750/- for SC/ST/PWD)

17. ENTRANCE EXAMINATION CENTRES

The Entrance Examination Centers for CITKEE-2025 are proposed as follows:

DIPLOMA/B. TECH/ B. DES/M. TECH/M. DES	(1) KOKRAJHAR (2) CHIRANG (3) BAKSA (4) UDALGURI (5) GUWAHATI (6) TEZPUR (7) DIBRUGARH
Ph.D	KOKRAJHAR

18. IMPORTANT INFORMATION

- Candidates should not send any photocopy of the certificates except the certificate claiming the reservation category (Caste Certificate/PWD certificate) in case he/she belongs to any.
- The appearing/appeared candidates are also eligible to appear in the Entrance Examination provisionally. However, he/she must produce the original certificates at the time of counseling.

In case a candidate fails to submit the same or fails to fulfill the eligibility criteria, the candidature will be rejected.

- c. The candidate must select the correct option (wherever applicable) and mention the appropriate Code and Code name for the Region of Permanent Residence. The selection list will be prepared based on the region of Permanent Residence and in case the candidate intentionally or unintentionally chooses the wrong option, his/her seat may be forfeited during counseling.

19. ISSUANCE OF ADMIT CARD

The admit card will be available for download at least fifteen (15) days ahead of the schedule of the Entrance Examination from the CIT admission portal. To download the Admit Card the candidate will have to login with the registered login e-mail ID and password.

20. SCHEDULE OF CITKEE-2025 ENTRANCE EXAMINATION

The CIT Entrance Examination-2025 will be conducted as per the following schedule-

DATE	MORNING 09:00 AM -12:00N	AFTERNOON 01:30 PM–04:30 PM
08.06.2025 (SUNDAY)	DIPLOMA (ENGG.)- DIRECT	B.TECH. (DIRECT)
	DIPLOMA (ENGG.)-LATERAL	DIPLOMA (AMT)
	B. DES	Ph.D.
	B. TECH (LATERAL)	
	M.TECH./M.DES	

21. DECLARATION OF RESULT

The Results of the CITKEE-2025 and the selected list of eligible candidates for admission will be declared on **20th June 2025 at 5:00 PM**. The results and selected list will be available on the Notice Board of the Institute and the Institute website. The candidates may also log on to CIT website: www.cit.ac.in to check their result.

N.B.-In case of unavoidable circumstances, the date and time for the declaration of result may be rescheduled.

22. SELECTION PROCESS

The selection of aspiring candidates for admission shall be based on their performance in the respective Entrance Examinations. However, the candidates must fulfill the eligibility criteria of essential educational qualification and age limit. The selection will be based on merit separately for all regions and reservation categories. Candidates who fail to furnish proof for their claims in respect of reservation of seat about region and category shall not be considered.

A merit/ranking list would be prepared based on the performance of the candidates in the Entrance examination separately according to their region and category. The ranking scheme for the qualifying candidates will be as follows –

The ranking for **CITKEE-2025 for the Diploma in Engineering** will be based on the total marks obtained in the Entrance exam, then in the order of individual marks obtained in Mathematics, Physics, Chemistry, Biology, and English, in case the total marks obtained by two or more candidates are same.

The ranking for **CITKEE-2025 for the Diploma in AMT** will be based on the total marks obtained in the Entrance exam, then in the order of individual marks obtained in Part B, Part A and

Section-4 of Part A, in case the total marks obtained by two or more candidates are same.

The ranking for **CITKEE-2025 for the Diploma in Engineering (Lateral Entry)** will be based on the total marks obtained in the Entrance exam, then in the order of individual marks obtained in Mathematics, Science, Computer Awareness and English Communication, in case the total marks obtained by two or more candidates are same.

The ranking for **CITKEE-2025 for B. Tech (Direct Entry)** will be based on the total marks obtained in the Entrance exam, then in the order of individual marks obtained in Mathematics, Physics, Chemistry, and English in case the total marks obtained by two or more candidates are the same.

The ranking for **CITKEE-2025 for B. Tech (Lateral Entry)** scheme will depend on the total marks obtained in Paper I and Paper II, then in the order of marks obtained in Paper II and Paper I. Again, for Paper I, the order of preference will be as Mathematics, Physics, Chemistry, and English.

The ranking for **CITKEE-2025 for B. Des (Direct Entry)** will be based on the total marks obtained in the Entrance exam, then in the order of individual marks obtained in Mathematics, Physics, Chemistry, and English in case the total marks obtained by two or more candidates are the same.

For candidates from BTAD or NE region seeking admission through JEE Mains, the merit list/ranking list will be prepared based on their Scores. The merit list/ranking list will also be based on their region and category.

23. COUNSELLING AND ADMISSION

The tentative schedule of the counselling and admission for various programmes is as given below-

	Module	Date & Day
First Counselling & Admission	Diploma/Diploma (Lateral)/ M.Tech/M.Des	24 th June 2025 (Tuesday)
	B.Tech (Direct entry)	25 th & 26 th June 2025 (Wednesday & Thursday)
	B.Tech (Lateral entry)/B.Des (Direct entry)	27 th June 2025 (Friday)
	B.Tech (Vertical entry)/B.Des (vertical entry)	03 rd July 2025 (Thursday)
Second counselling & Admission	Diploma/B.Tech	01 st July 2025 (Tuesday)
	B.Des/M.Tech/M.Des	02 nd July 2025 (Wednesday)

❖ *Counselling and admission for Ph.D will be notified in due course of time.*

- Candidates selected for admission must pay the Admission Fees on the day of counselling, failing which their seat shall automatically be treated as cancelled.
- During counselling, the candidates have to apply for the available branches separately in the Counseling Form which will be made available in the admission portal before the start of counselling. Candidates are advised to fill out the counselling form and fill in the relevant information before attending counselling and admission on a notified date. Branches will be allotted by the Chairperson of the Admission Committee on fulfilment of the requisite eligibility criteria.
- Discrepancies found in the information furnished in the Counseling Form and in the Application Form may result in the cancellation of admission.
- The presence of the candidate is compulsory during counselling. Under exceptional cases, a parent/guardian may be permitted to attend the counselling process.
- All the qualified candidates (i.e., mark those scoring above a minimum cutoff) would be called for counselling. However, all candidates called for counselling are not guaranteed a seat.
- The candidates must possess the original and photocopies of all the relevant certificates during the day of verification/counselling.
- The following is the list of essential certificates/documents to be submitted during Counselling/Admission.
 - Age Proof Certificate.
 - All mark-sheets.
 - Category Certificate (SC/ST/OBC/PWD/EWS).
 - Permanent Residential Certificate (PRC).
 - Conduct/Character Certificate from the institution last attended.
 - Gap Certificate (if applicable).
 - Migration Certificate in original.
 - Anti-ragging affidavit.

NB: The candidates who are in government service shall have to submit a No Objection Certificate (NOC) during the admission.

24. DETAILS OF IMPORTANT DOCUMENTS/CERTIFICATE

Permanent Residence Certificate (PRC): All the candidates have to produce a Permanent Residence Certificate (PRC) issued by a competent authority. It is on the basis of this that admission would be granted and placed in the appropriate region which consists of BTAD, NE (Outside BTAD) or All India (Outside BTAD & NE). If discrepancies are found in the region quoted by the candidate in the application form and that furnished in the certificate then the admission will stand cancelled. This certificate is a must and without it admission will not be done.

Caste Certificate: The candidates belonging to Scheduled Tribe (ST), Scheduled Caste (SC), and Other Backward Classes (OBC) must produce a Caste Certificate issued from such a competent authority as District Magistrate, SDO (Civil), etc. This certificate is a must during the counselling and without it, admission will not be done.

PWD Certificate: The candidates belonging to this category must submit a certificate issued by the Government Medical Officer in support of their claim.

EWS Certificate: Candidates who are not covered under the reservation scheme of SCs, STs, and OBCs and identified as belonging to the EWS category may submit a certificate issued by the competent Authority in support of their claim.

Medical Certificate: The medical certificate is to be obtained from a govt. medical officer after a general checkup which should state that the candidate is fit to undergo a rigorous technical education and training and that there is no serious illness which would impede the normal attendance and study. A separate medical certificate is also required to be obtained from an eye specialist regarding the fitness of the eyes.

Gap Certificate: If there is a gap period between the year of passing of qualifying examination and the year of admission then the candidate has to show a Gap Certificate issued by a competent authority in which the candidate was engaged during this period of stay. Such an authority may be the head of an institution if the candidate was doing a course, the head of an organization if employed, or a court affidavit mentioning the reasons for the gap period

25. FEE STRUCTURE

The summary of the fee structure for fresh admission into various programmes of the institute for the current academic year-2025 is as given below-

Programme	Category	Admission Fee	Hostel Admission Fee	Mess Fee (for ONE semester)
DIPLOMA (All Entries)	GE/OBC	19000.00	8000.00	6600.00
	SC/ST/PWD	13000.00	8000.00	6600.00
B. TECH/B. DES (All Entries)	GE/OBC	30500.00	8000.00	6600.00
	SC/ST/PWD	18500.00	8000.00	6600.00
M. TECH/M. DES	GE/OBC	28000.00	8500.00	6600.00
	SC/ST/PWD	20000.00	8500.00	6600.00
Ph.D	GE/OBC	21500.00	11000.00	6600.00
	SC/ST/PWD	19000.00	11000.00	6600.00

N.B.: The institute reserves the right to review the fee structure from time to time. A detailed breakup of the fee structure can be obtained from the institute's website.

26. ADMISSION WITHDRAWAL RULE

Withdrawal of Admission is allowed till 30 days from the date of admission. Candidates can withdraw his/her admission from the Institute by submitting an application form available on the CIT admission website. Refund of Fees after deducting processing fees of ₹ 2000/- will be refunded after the thorough verification of transaction details. The refund process normally takes 30-45 days from the dateline of the Application withdrawal application submission. No request for a refund of fees would be entertained thereafter. The details of documents to be submitted along with the withdrawal application form are given in the admission web portal.

27. ATTENDANCE IN CLASS AFTER ADMISSION

Attendance on the first day of class of the semester is compulsory. Absence from class without proper intimation during the first 15 days would be treated as withdrawal of admission and such a student would not be allowed to join the classes.

28. GENERAL ACADEMIC REGULATIONS

GENERAL CONDUCT & DISCIPLINE

All students must conduct themselves as responsible people (as ladies & gentlemen). Students are not allowed to:

- ❖ Willfully damage steal or remove property/belongings of the Institute/Hostel or fellow students.
- ❖ Indulge in possession, consumption, or distribution of alcoholic drinks and drugs.
- ❖ Take part in noisy and unseemly behavior and disturb the studies of fellow students.
- ❖ Resort to ragging freshers/fellow students.
- ❖ Take recourse to unfair means in examinations.
- ❖ Use Mobile Phones/iPhones etc. in academic buildings, libraries, laboratories and workshops.

LEAVE OF ABSENCE

All leave applications have to be submitted to the concerned Course Coordinators/HoDs stating fully the reasons and supported with documents. Leave of absence will be accepted only within a week of the student's rejoining of classes after ailments or other granted leaves. If a student will be away from the Institute for more than one week then the prior application has to be submitted to the Dean of Academic Affairs through the concerned HoD and such leaves will have to be sanctioned in advance. If a student is absent from the Institute for more than 06 (six) weeks without permission then that will result in his/her name being struck off from the Institute's Rolls. Under no circumstances should a student's attendance fall below 75%. In other words, no consideration of attendance will be made once a student's attendance falls below 75% in a subject.

29. CHANGE OF BRANCH (DIPLOMA/UNDERGRADUATE ONLY)

Depending on the availability of seats, changing of branch in 3rd Semester is allowed based on the performance of the student during the first two semesters.

- ❖ A maximum of 10% of the total number of seats in a Branch may be offered to applicants for change of branch subject to availability of seats in that branch.
- ❖ The selection of applicants will be based on merit. Students in the Diploma module who secure at least 6.5 CGPA from the 1st and 2nd semester are only eligible for branch change. In the case of UG module, students who have secured at least 7.0 CGPA from 1st and 2nd semester are only eligible for branch change. No applicant with back paper(s) will be considered for a change of branch.
- ❖ Students who passed 1st and 2nd-semester examinations in one sitting only are eligible for branch change.
- ❖ However, the students from **Animation and Multimedia Technology** will not be eligible for change of branch to any other branches

30. RENEWAL REGISTRATION FOR CONTINUING STUDENTS

All the continuing students have to perform Renewal Course registration every semester for promotion to the next higher semester as per the schedule of the Academic Calendar, failing which, the student shall be treated as a year-dropped and he/she will not be allowed to attend the regular classes/semester examination.

31. HOSTEL ADMISSION AND GENERAL HOSTEL RULES

For hostel Admission, a candidate has to apply separately with the Hostel Application Form, issued on the day of counselling to the Member Secretary, Hostel Committee. The selected list will be finalized by the 'Hostel Admission Committee' and approved by 'The Head of the Institution'. **All the admitted candidates to the hostels have to furnish an undertaking of not resorting to ragging in the hostels and the Institute.** A student must remember that the hostel is the home of the students in the Campus and so is expected to behave in such a manner as to bring credit to oneself and the Institution.

The following rules have to be followed by all students residing in the hostels and institute campus as a whole. Violation of hostel rules will make students liable for disciplinary actions including expulsion from the hostel/institute.

- ❖ Each student must occupy the room allotted to him/her for the session by the warden and no change of room shall be made without his/her permission.
- ❖ No student shall keep any unauthorized person in his/her room.
- ❖ In the event of mischief/foul play or accident etc. the warden can break open the room for investigation.
- ❖ Whenever the student proposes to leave the station or to remain outside the hostel for the night, he/she should obtain prior permission from the warden.
- ❖ No female visitor is allowed to enter the boys' hostel and male visitor in girls' hostel without the written permission of the respective warden.
- ❖ Students are forbidden to utilize the hostel staff as privates or abuse them in any way.
- ❖ Electric stoves, room heaters, or other electric appliances are not allowed in the hostel.
Strictly forbidden in the hostel are:
 - *Possession or use of alcoholic beverages.
 - *Possession or use of addictive or hallucinogenic drugs.
 - *Possession or use of firearms/explosives or any lethal weapons.
 - *Gambling
 - *Playing cards
 - *Loitering around unnecessarily
- Ragging in any form is strictly prohibited in the hostel room and compound. Ragging is a symbol of immaturity. To eliminate such incidents students of the first year are urged not to visit other hostels without the Warden's permission.
- Cleanliness of the rooms is to be maintained by the student himself.
- Hostel students are not allowed to use motorized vehicles inside the Campus.
- Students should carry their Identity Cards all the time and produce the same whenever demanded by the authority.

- Parents are especially requested to guide their ward so that their ward doesn't indulge in any physical violence.
- Any point/issue not covered by these rules shall be decided by the Director.

All the students admitted into the hostels have to submit an anti-ragging affidavit within one month from the date of hostel admission.



32. ANTI-RAGGING

Ragging in any form is banned in CIT and anyone indulging in ragging during the entire period of his/her study in CIT is likely to be punished appropriately which may include expulsion from the Institute, suspension from the Institute or classes for a limited period, or fined with a public apology. The punishment may also take the shape of:

- Withholding Results
- Withholding Scholarships or other benefits

Suspension or expulsion from the Hostel or Mess or Collective Punishment if the individual committing or abetting ragging is not identified, and/or an entry in the conduct certificate mentioning the act of ragging indulged in by the students concerned

Admitted students shall have to submit an affidavit on a non-judicial stamp paper duly notarized by the Oath Commissioner by the student and the parent/guardian separately in a format that is available on the website http://www.antiragging.in/Site/Affidavits_Registration.aspx within fifteen days from the date of admission otherwise the admission stands cancelled. Further, all the students admitted into the hostels have to submit a separate affidavit provided on the CITK admission website.

33. DEPARTMENT DETAILS AND SYLLABUS OF THE CITK ENTRANCE EXAMINATION-2025

Candidates are advised to visit the institute website <https://cit.ac.in/> for department details. For Syllabus of CITK Entrance Examination-2025, Visit <https://admission.cit.ac.in/entranceexams>